



2010-2020

SELECTED WORKS

HUSEYIN PENBEOGLU

to see all my works & resume
please visit hpenbeoglu.com

EXECUTIVE SUMMARY

I have had extensive work experience in architectural office environments giving me varied skills and the ability to work with different types of projects since 2010.

I am a conscientious & systematic architect who works hard and pays attention to detail. I'm flexible, quick to pick up new skills and eager to learn from others. I also have lots of ideas and ready to share with anyone.

I would be delighted to discuss any possible vacancy with you at your convenience.

Kind Regards,
Huseyin Penbeoglu

+44 (0) 7766 - 401059
mail@hpenbeoglu.com

London / UK

Nova East - London

Commercial, Office Building, BIM Level 2



Kepez Masterplan

Urban Planning, Mixed-Use, Residential & Office



The Museum Hotel - Antakya

Hospitality, Awarded



Kucukcekmece Municipality

Public Building, BREAM Certified, BIM



GOP Municipality

Public Building, Urban Design, Transportation



Konya Metro

Fit-Out, Transportation



Sivas STSO Way Station

Transportation, Retail Design, Interior



F&B Culture Restaurant

Interior, Hospitality



Tepe Law Office

Interior, Office



Factoryscape

Contest Entry, Sustainability, Book Selection



NOVA EAST

I was part of an amazing team which produce Stage 3-4 drawings of Nova East building at Victoria street by using BIM Level 2 standards. We worked in harmony with the help of Revit Worksharing, Naviswork and BIMcollab (BCF).

#Veretec #London #Victoria St.
#Commercial #BIM Level 2 #Revit
#Stage 3-4 #In-progress #UK
#Construction Drawings



Exterior Renderings



Facade Model



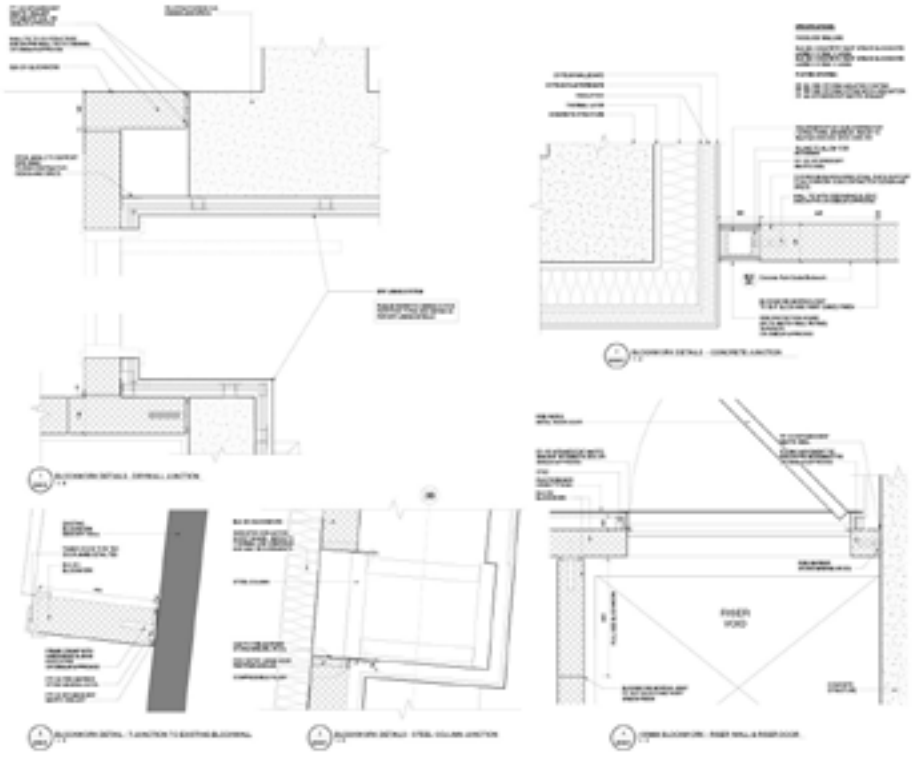
Construction Site



Grand Floor - GA



South Facade



Detail Drawings 1/5 - 1/20

KEPEZ MASTERPLAN

With the estimated 45K people capacity, it is still one of the biggest urban transformation projects in Turkey. Project started with masterplan analysis in all-scales and followed by presentation of ideas & masses to demonstrate possibilities. I participated as a senior architect responsible from research & mass study, masterplan development & presentation.

#Ozer-Urger #Turkey #Antalya
 #Urban #Design #Masterplan
 #Facade #DD #Submission Pack
 #Construction Drawings #In-progress



3D Mass Study



Site Plan



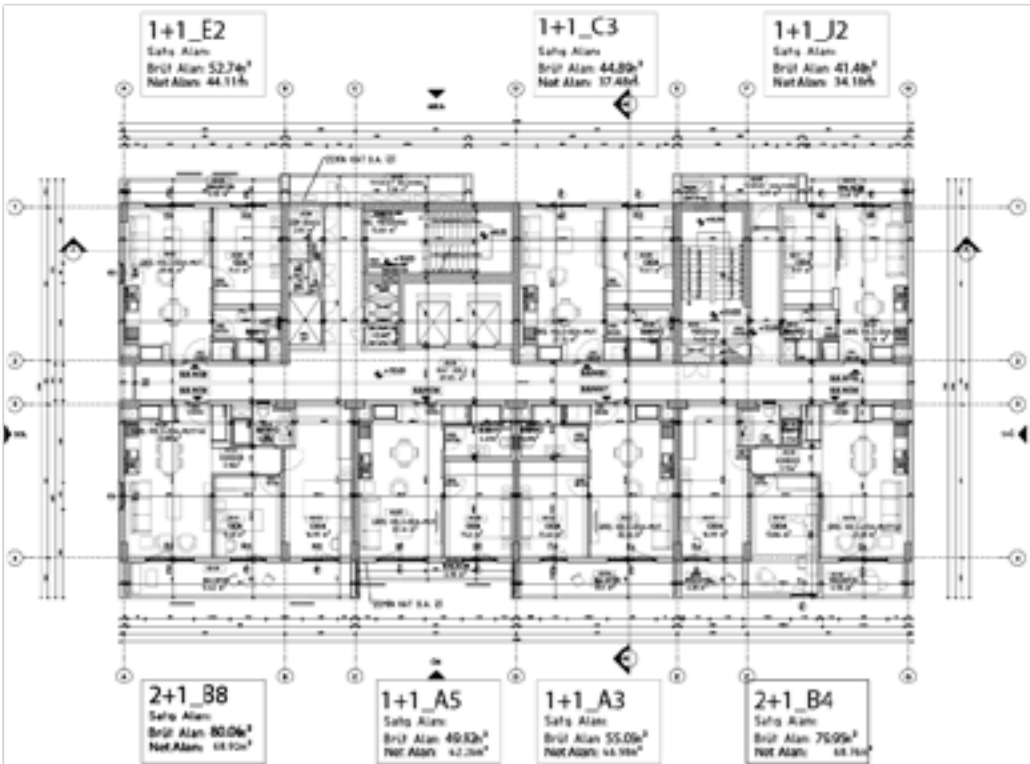
Residential, Commercial & Retail Analysis of Antalya to understand the potential of the city.



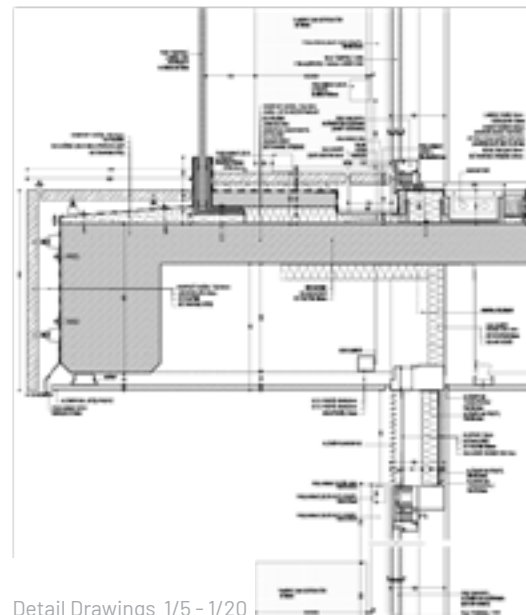
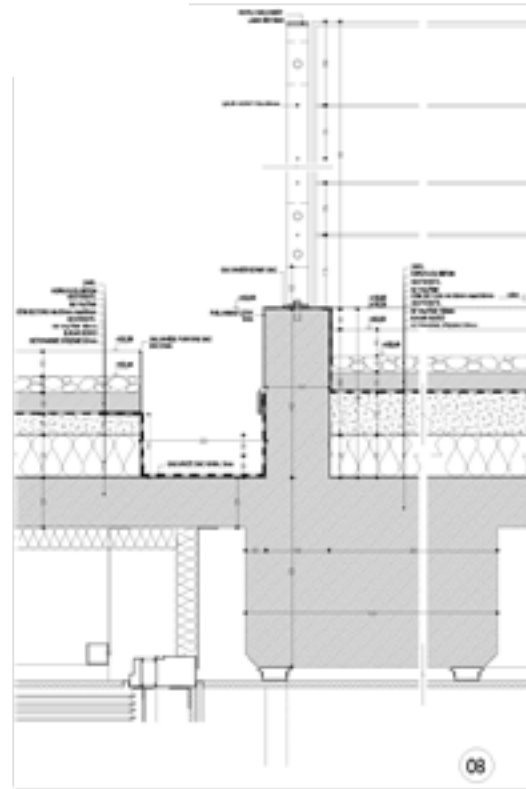
Graphic Representation of Transportation Networks & Neighbourhood Relationship of The Site



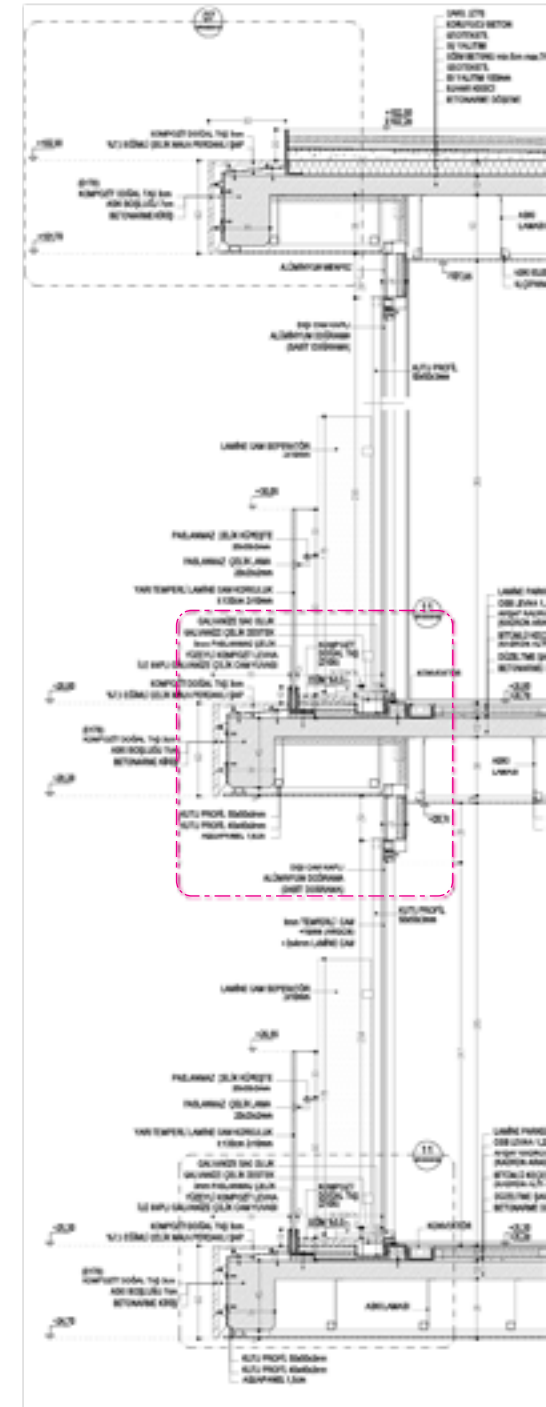
Facade Design Studies



Floor Plan



Detail Drawings 1/5 - 1/20





THE MUSEUM HOTEL - ANTAKYA

Started as typical "Hotel Project" but after an archeologic discovery of a ancient mosaic school, project evolved to a Museum & Hotel complex. Most of the hotel function moved to terrace level, the rooms (boxes) & circulation are connected to steel open structure. I participated as an architect responsible from 2d construction drawing, 3d modelling and liaising with other disciplines.

#Emre Arolat #Turkey #Antakya
#Architecture #Design #Technical
#Drawings #Museum #Hotel
#Hilton #Double-Tree #Realized



Terrace Level



Ground Floor Plan



Section



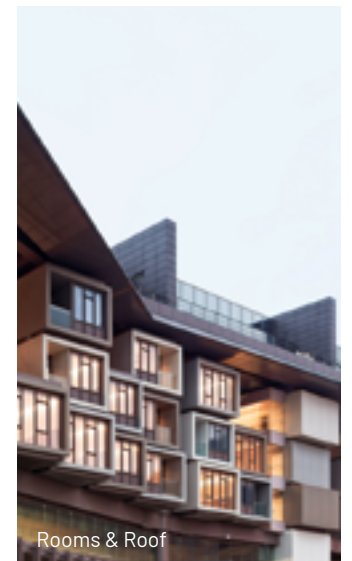
Photo by Cemal Emden



Photo by Cemal Emden



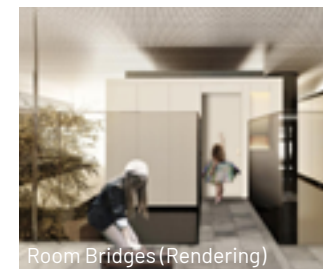
Facade (Rendering)



Rooms & Roof



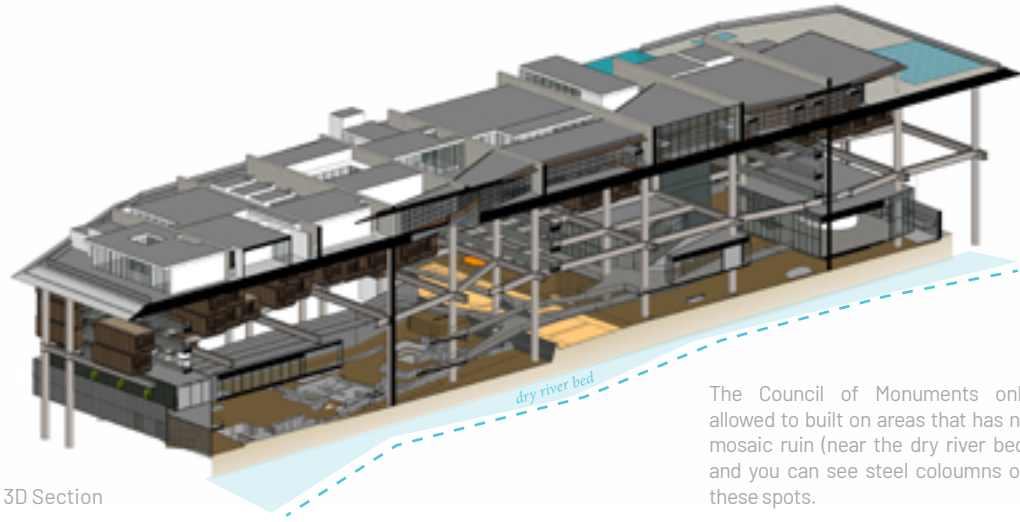
Mosaic & Lobby



Room Bridges (Rendering)



Archeological Findings (Photo by Cemal Emden)

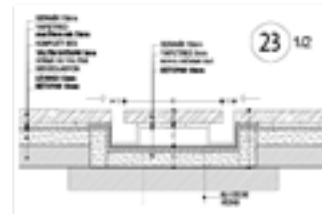
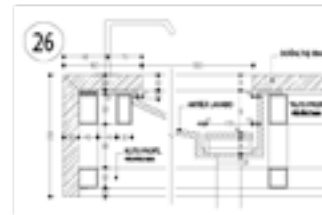
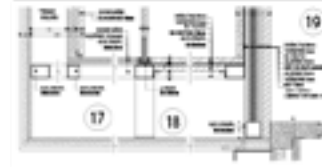
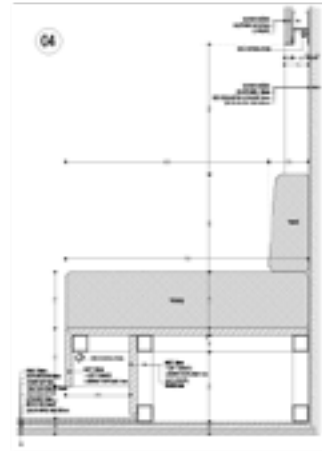


3D Section

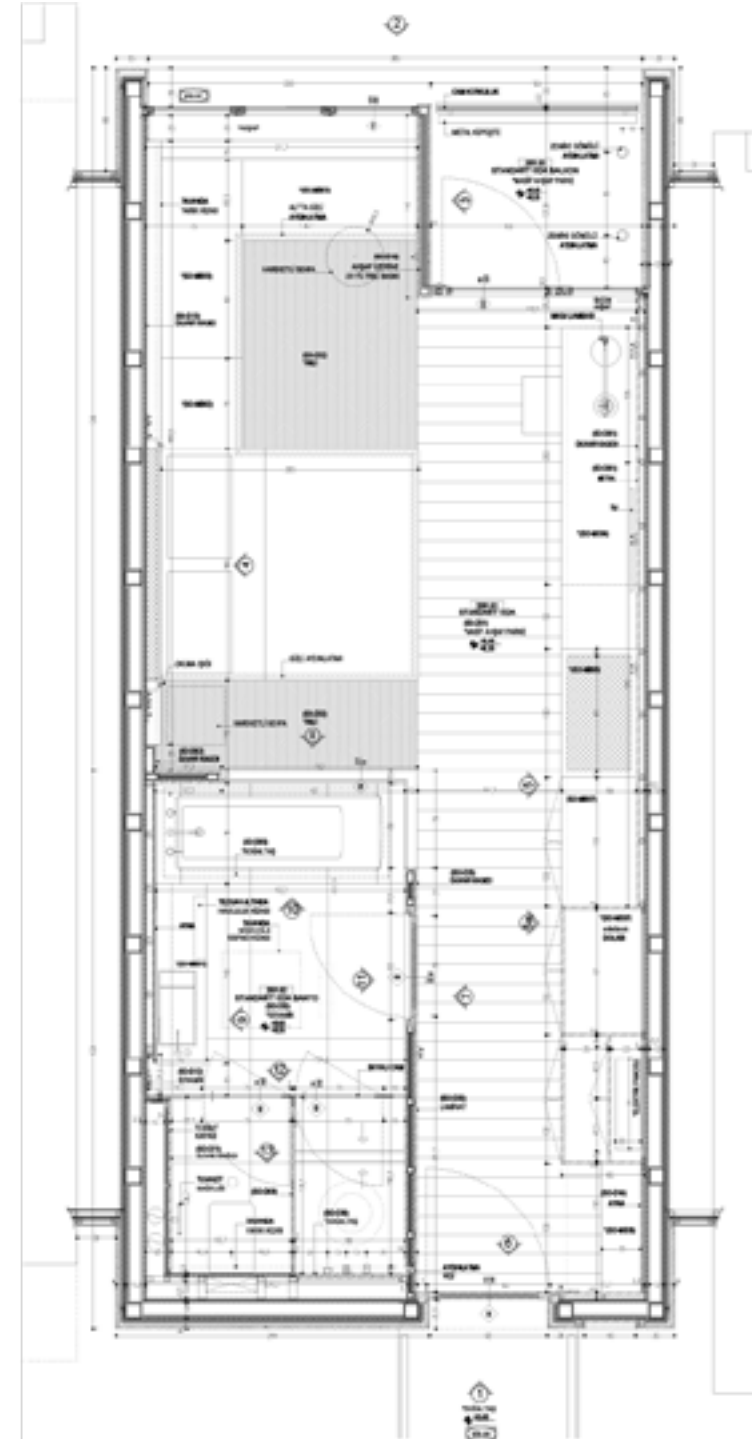
The Council of Monuments only allowed to built on areas that has no mosaic ruin (near the dry river bed) and you can see steel columns on these spots.



Rooms Level - Floor Plan



Standart Room
Plan & Details 1/20

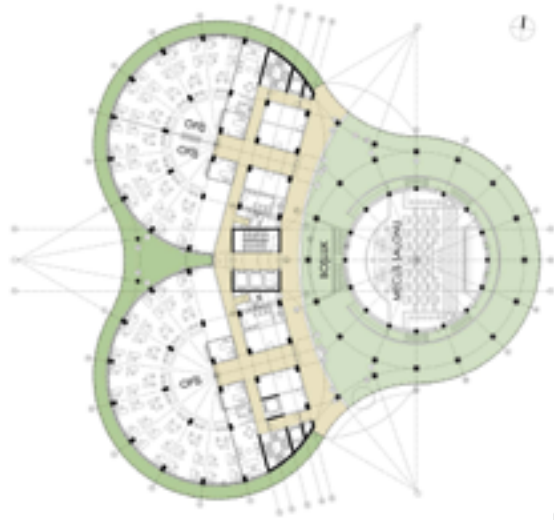


KÜÇÜKÇEKMECE MUNICIPALITY

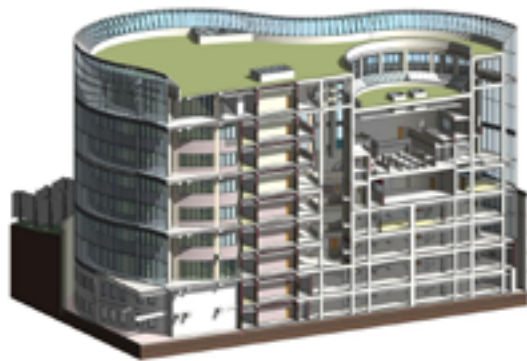
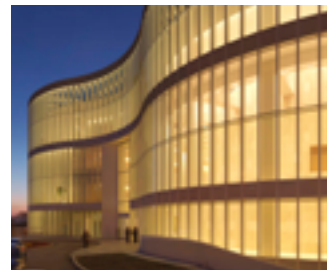
The first BREEAM certificated municipality building of Turkey that pioneering to the public with its sustainable future vision. I participated as an assistant architect responsible from modelling, early Revit application, graphic design and illustrations, also descriptive essays.

#Mutlu Çilingiroğlu #Turkey
#İstanbul #Architecture
#Sustainable #BIM #Modelling
#Public Building #Realized

Photography by Cemal Emden
Facade (top) & Circulation Spaces (bottom)



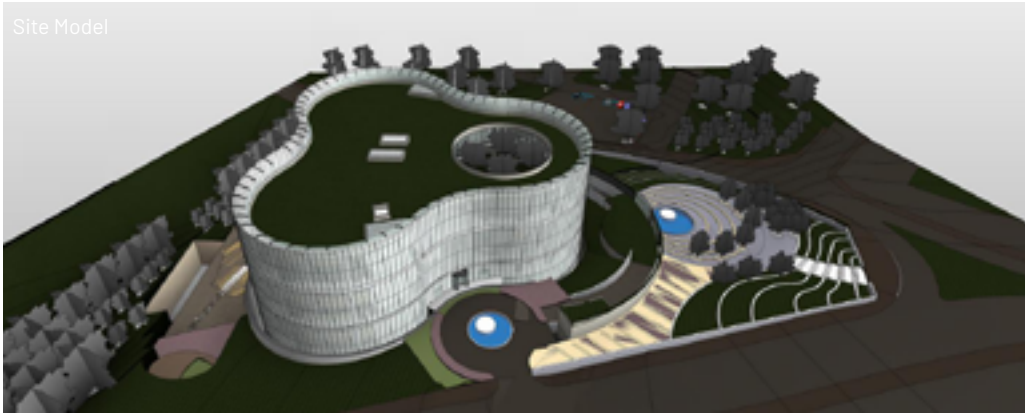
Ground Floor



(Revit) 3D Section



Site Model



Entrance (Model)



Entrance



The most important feature of the building is its double facade design and it provides a better lightning, passive air climatization and a circulation space for municipality employees.

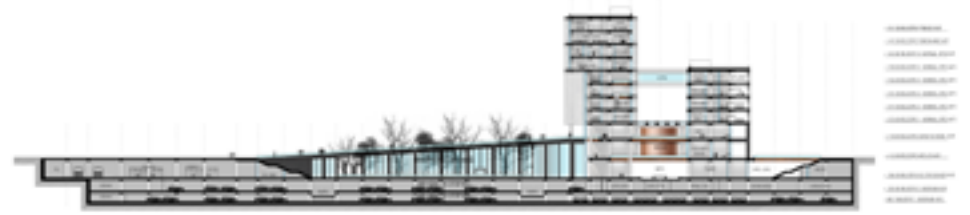
Double Facade
Cross-Section
(Revit) 3D Detail



GOP MUNICIPALITY

The new municipality building of Gaziosmanpaşa and surrounding urban space designed for a better city life. I participated as an senior architect responsible from design development including new plan schematics, re-modelling, liasing with municipality & other disciplines.

#Ozer Urger #Turkey #İstanbul
 #Architecture #Urban Design
 #Public Building #Design
 Development



Section



Birds Eye View



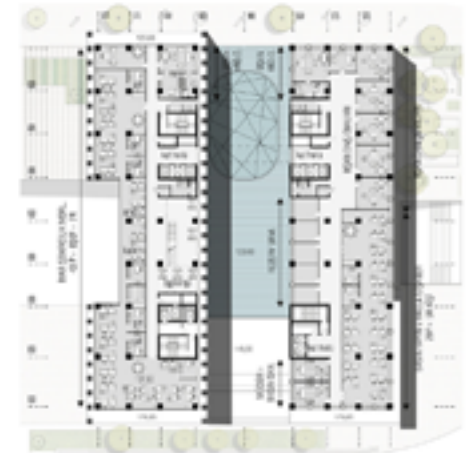
Mass Study



City Square



Site Plan



Offices - Typical Floor Plan

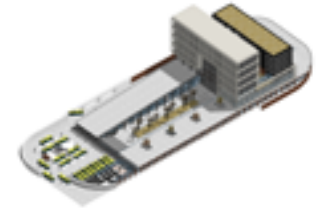
Building Exterior



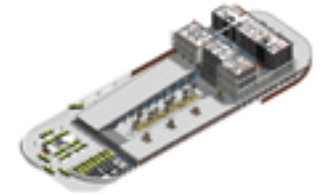
Private Entrance



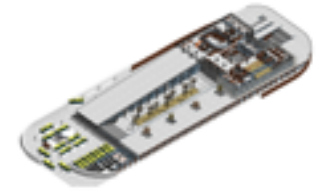
The building has two main entrances for municipal employees and the public. Also public transportation and private car parking solved on different levels.



Public Entrance



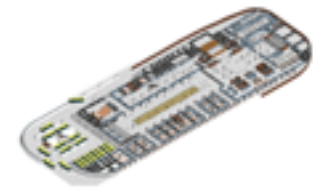
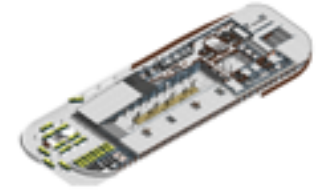
Culture Street Level +106



City Hall Level +118



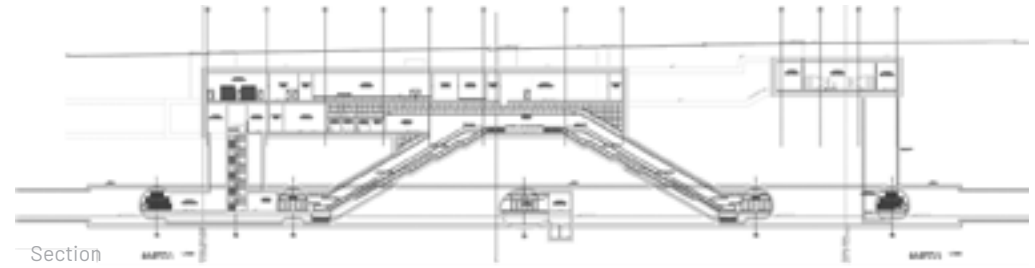
Coutyard



KONYA METRO

All stations including the peron, ticket hole and street-level access units of the planned metro line & transfer station to a speed train have been designed to create better experience for citizens of Konya. I participated as an architect responsible from concept design, related drawing & 3d modelling, visualization, liaising with other disciplines.

#Ozer Urger #Turkey #Konya
 #Architecture #Transportation
 #Metro #Public Design #Drawings
 #Interior #Fit-Out #Under-construction



Section



Ticket Hole Alternatives

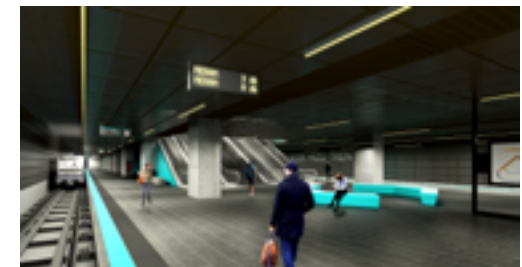
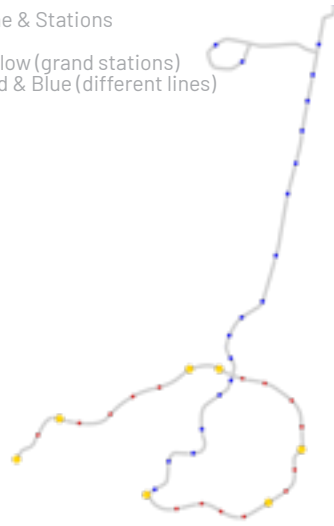


High Speed Train - Transfer Station
 Peron Design

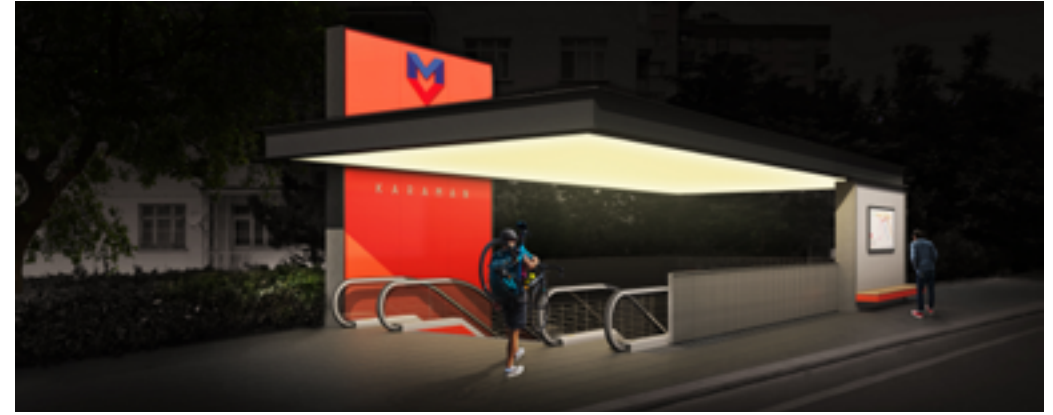


Line & Stations

Yellow (grand stations)
 Red & Blue (different lines)



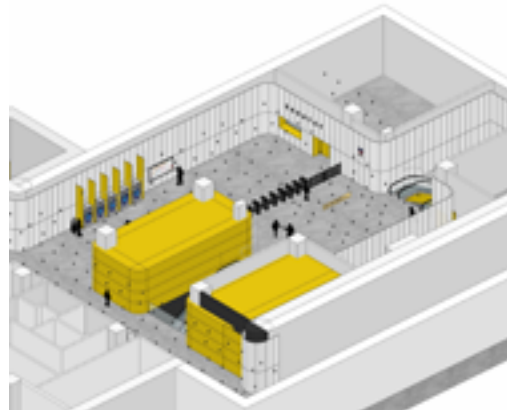
Peron Alternatives



Alternative entrance types designed depending on the location & usage.



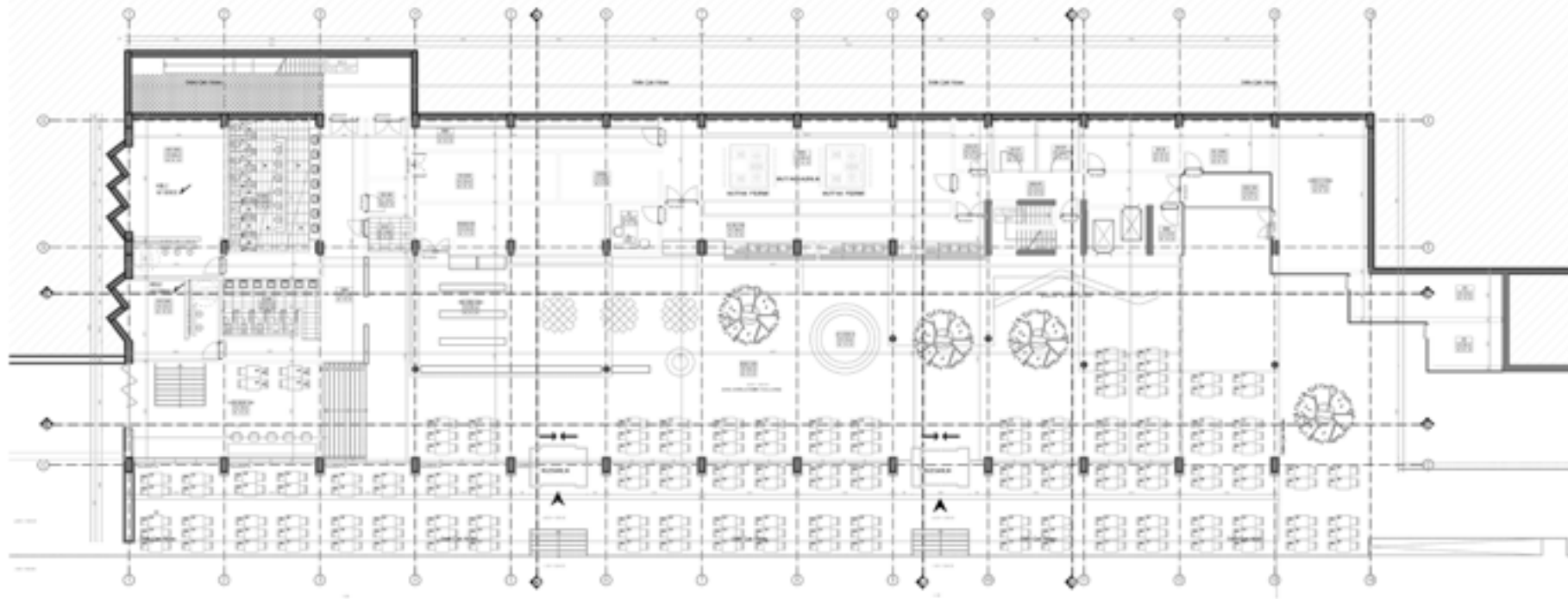
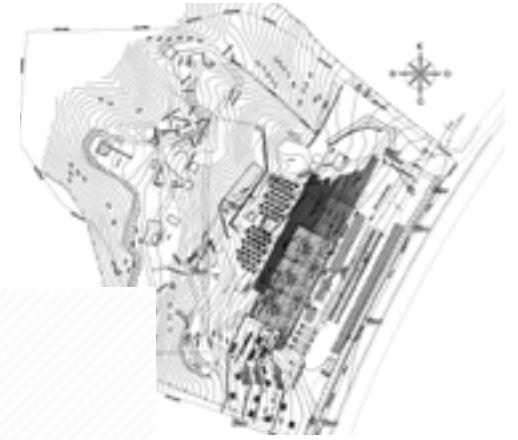
Ticket Hole



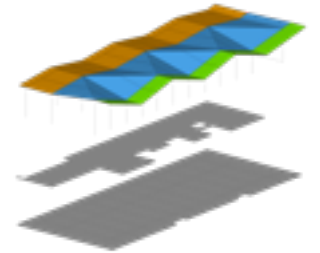
SIVAS STSO - WAY STATION RETAIL

It's a mixed-use way station including retail units, a restaurant & a wedding venue. The whole building rescaled according to the brief of the client while retaining the concept design, also I coordinated the design development & technical design phases. I participated as an architect responsible from 2d construction & furniture drawings, remodelling and liaising with engineers.

#Ozer Urger #Turkey #Sivas
 #Architecture #Design #Retail
 #Mixed-Use #Drawings
 #Restaurant #Design Development
 #Coordination #STSO



The main building located near the main high-way and the rest of the site will be used in the summer for alfresco weddings. The ground floor & the mezzanine slabs connects the different levels of the topography, under the one roof.



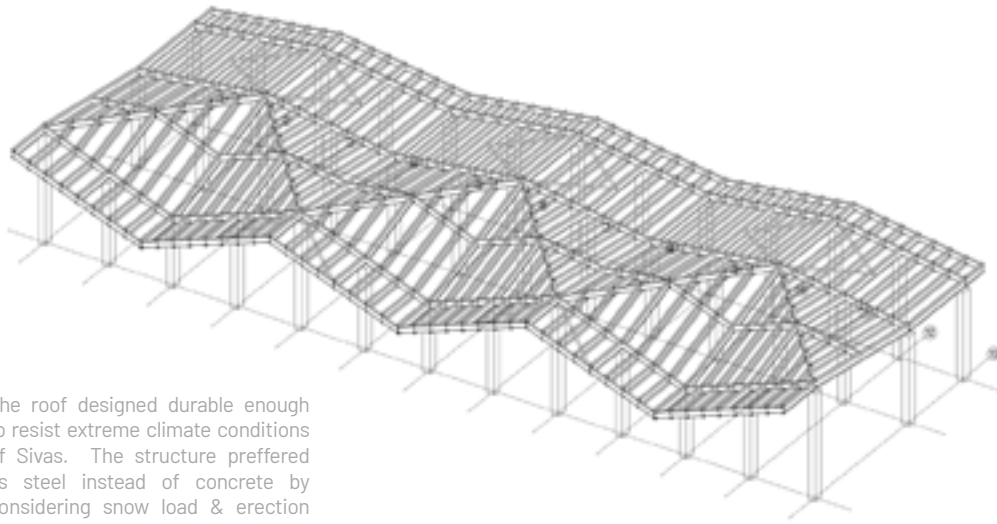
Slabs



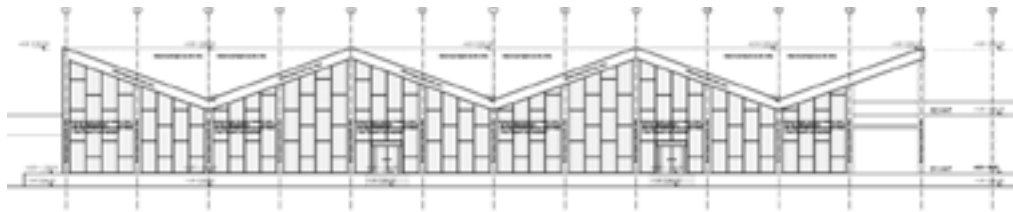
Approaching to Way Station



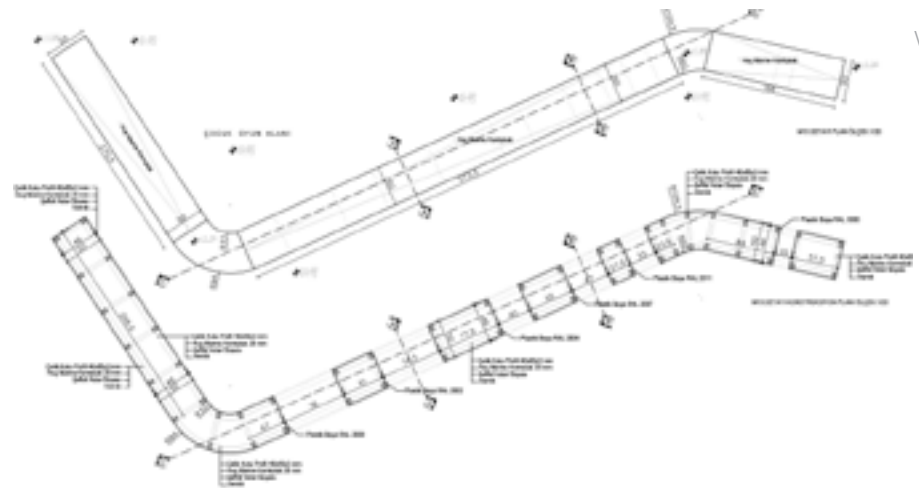
Birds Eye View



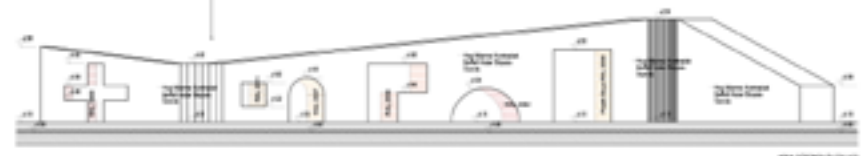
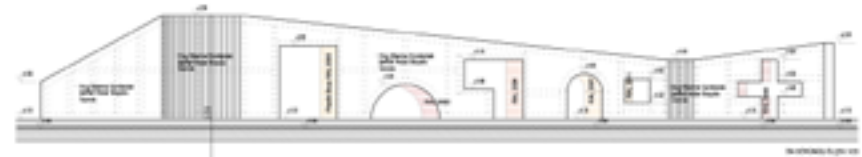
The roof designed durable enough to resist extreme climate conditions of Sivas. The structure preferred as steel instead of concrete by considering snow load & erection scenarios.



Facade & Section



Retail Area Visualization & Example Fit-Out Drawings



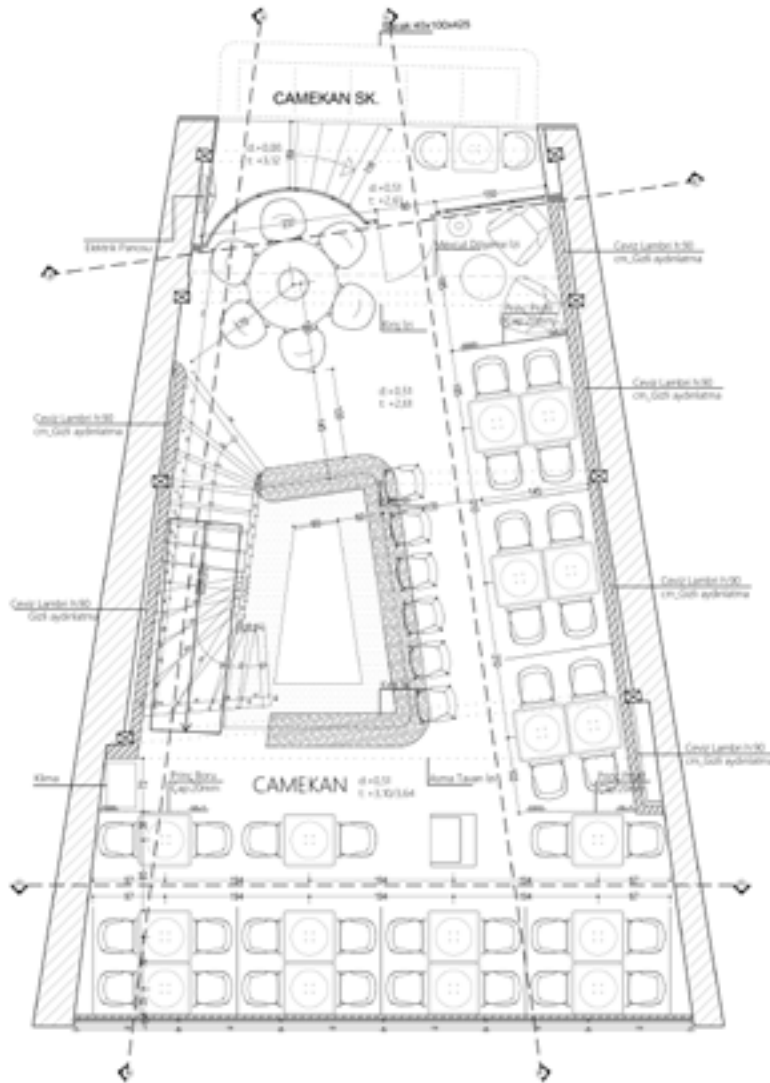
1/20
Playground

F&B CULTURE

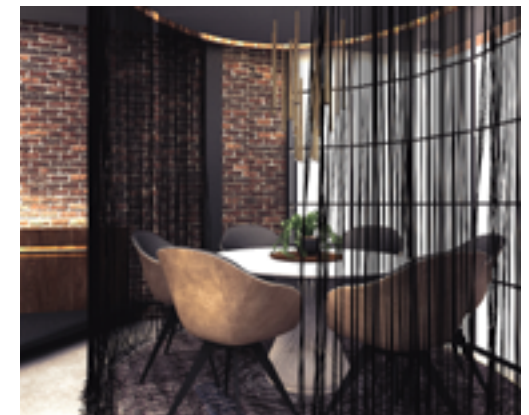
The brand new face & interior design for a already functioning restaurant in the Tünel, Beyoğlu. Despite the non-orthogonal faces of interior walls and a circulation related problems limited the solutions, all spaces blended gently into the proposed concept. Concept design, presentation, visualization & technical drawings for a space and furnitures developed carefully.

#Self-Employed #Turkey #İstanbul
 #Architecture #Restaurant
 #Bar #Concept Design #Interior
 #Visualization #Fit-Out #Furniture

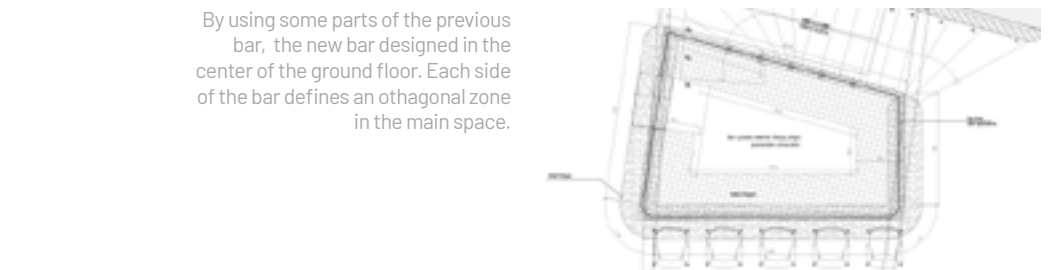
Interior Visualizations



Ground Floor



Facade
Lightening Structure
Copper Art



WC

By using some parts of the previous bar, the new bar designed in the center of the ground floor. Each side of the bar defines an othagonal zone in the main space.

Terrace Floor



Rusted Steel Division

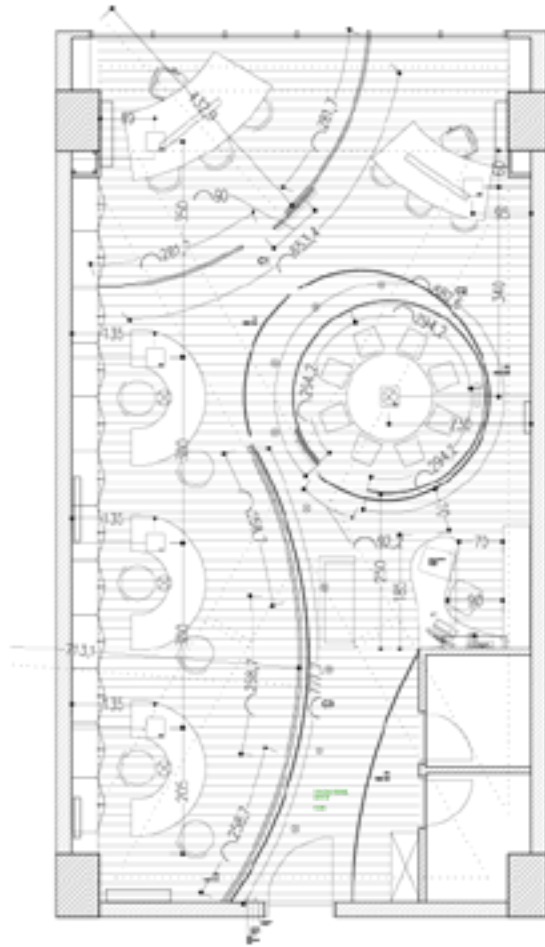
TEPE LAW OFFICE

Instead of typical orthogonal solution, we created a space-based organic divisions between the shared spaces (secretarial, waiting room, meeting room, WC & kitchen) and private spaces (head office, open office). Because the visual & aural separation is the key fact for a Law Office. The result is an "uncommon" law office interior design which is young, dynamic, open and flexible as they wish.

#THINK #Turkey #Istanbul
#Interior #Design #Furniture
#Concept #Construction
#Realized



Model



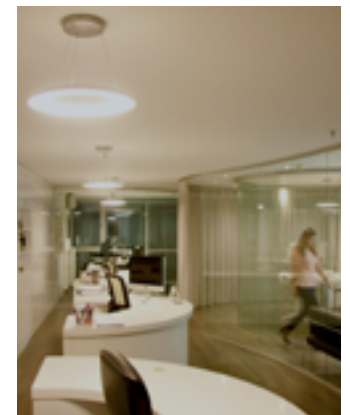
Plan

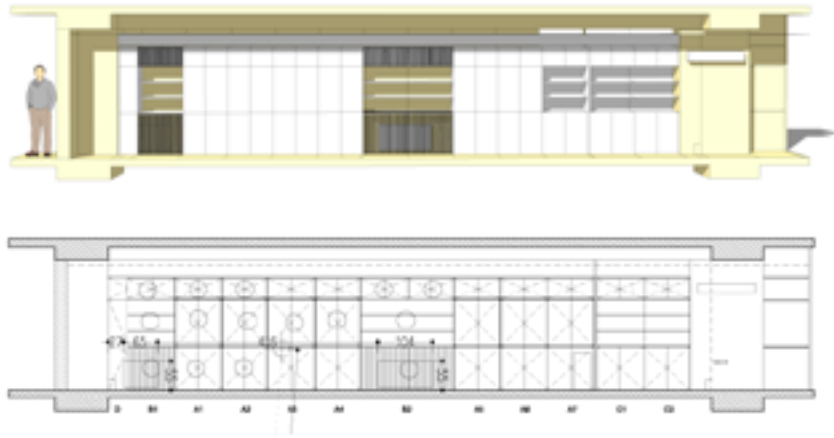


Room without doors

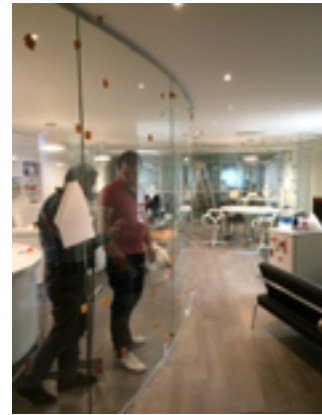


Meeting Room & Corridor





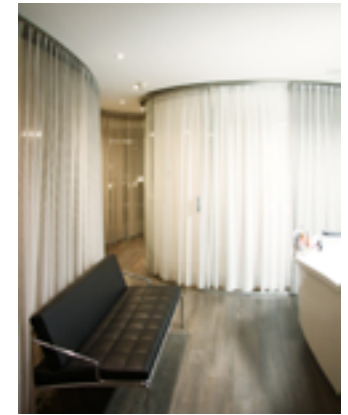
Archive Design



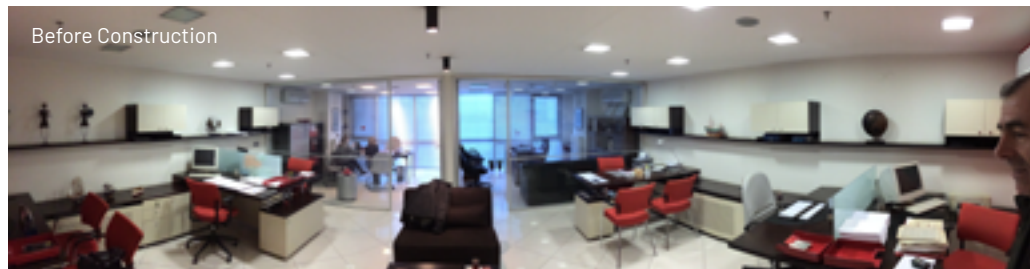
the construction of a welcoming space



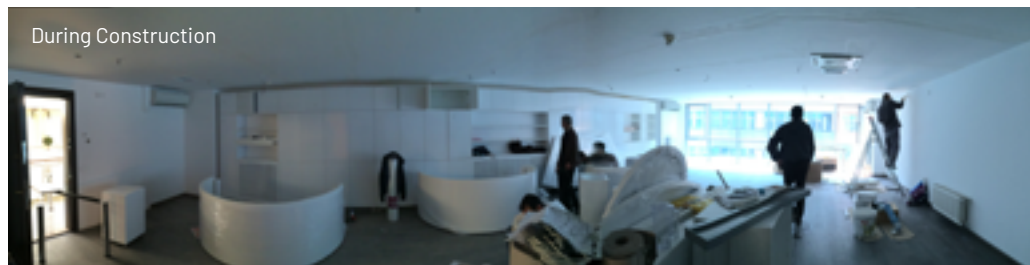
daily usage while there no customer, the spaces are open to interaction & no privacy.



alternative usage when there are people in the office for a meeting, full privacy



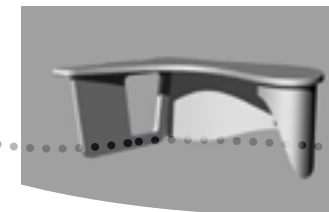
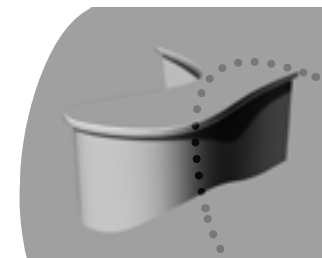
Before Construction



During Construction



After Construction



Bespoke Welcoming Desk Design

The original desk was a standart ethodagonal office desk and the client asked for optimal new design. Each curve is a result of a complex relationship between its surrounding and needs of the users.

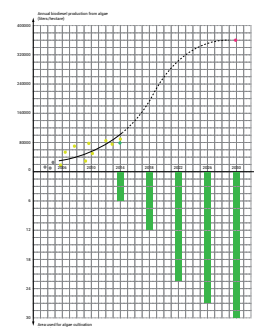
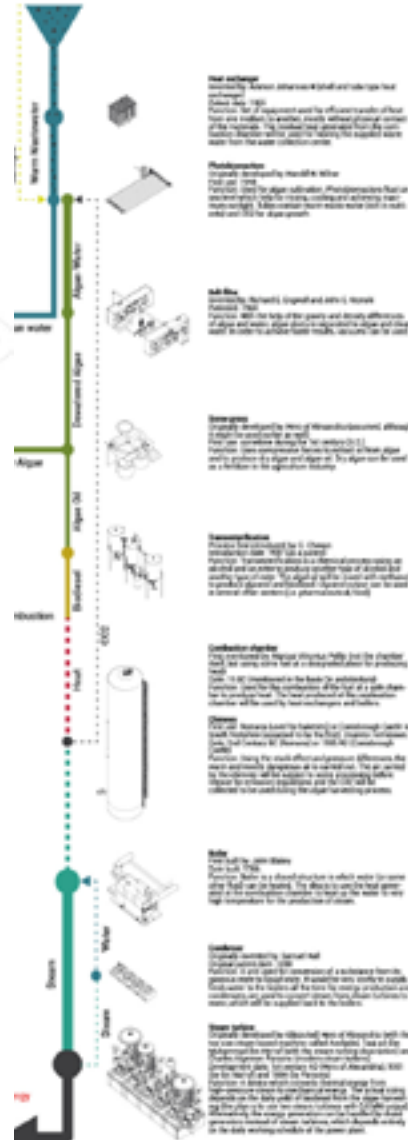
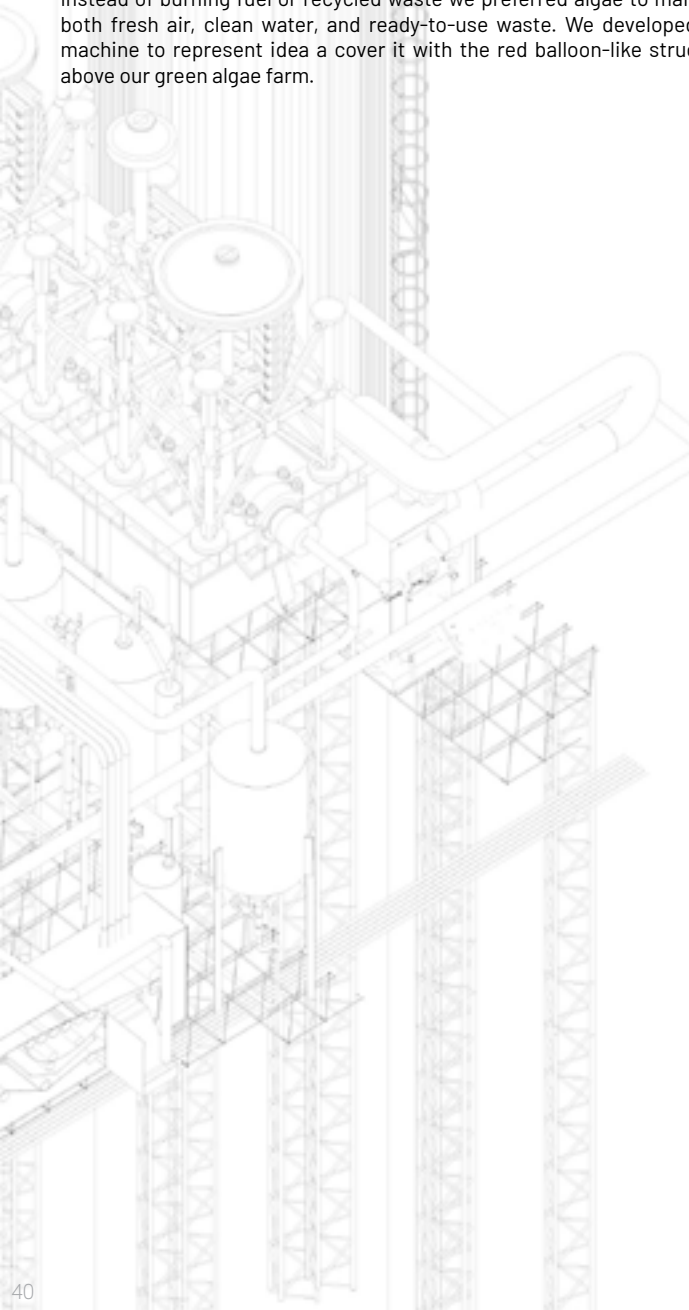
FACTORYSCAPE / LAND-ART

Major 19th-century energy production methods based on burning things. Instead of burning fuel or recycled waste we preferred algae to maintain both fresh air, clean water, and ready-to-use waste. We developed the machine to represent idea a cover it with the red balloon-like structure above our green algae farm.

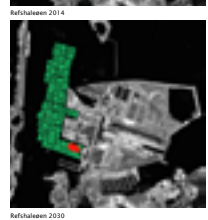
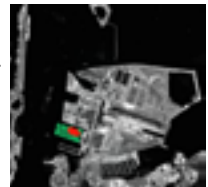
#THINK #Denmark #Copenhagen
 #Architecture #Design
 #Landscape #Concept
 #Competition #Sustainable
 #Energy #Publication Selection



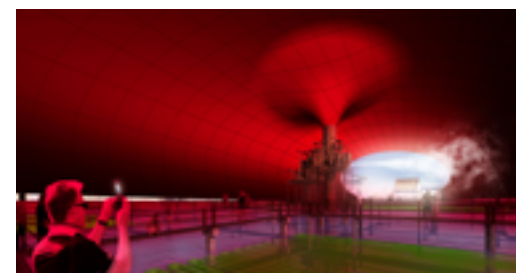
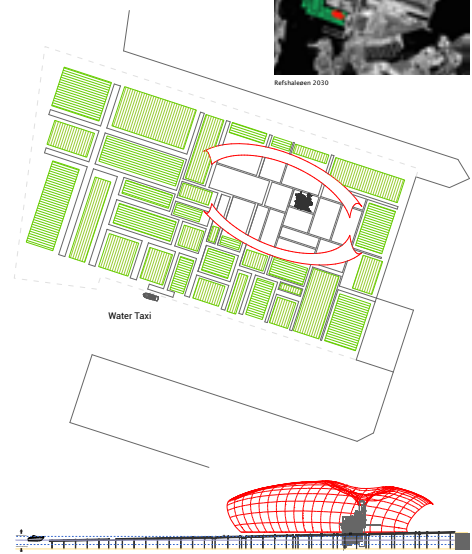
Silhouette



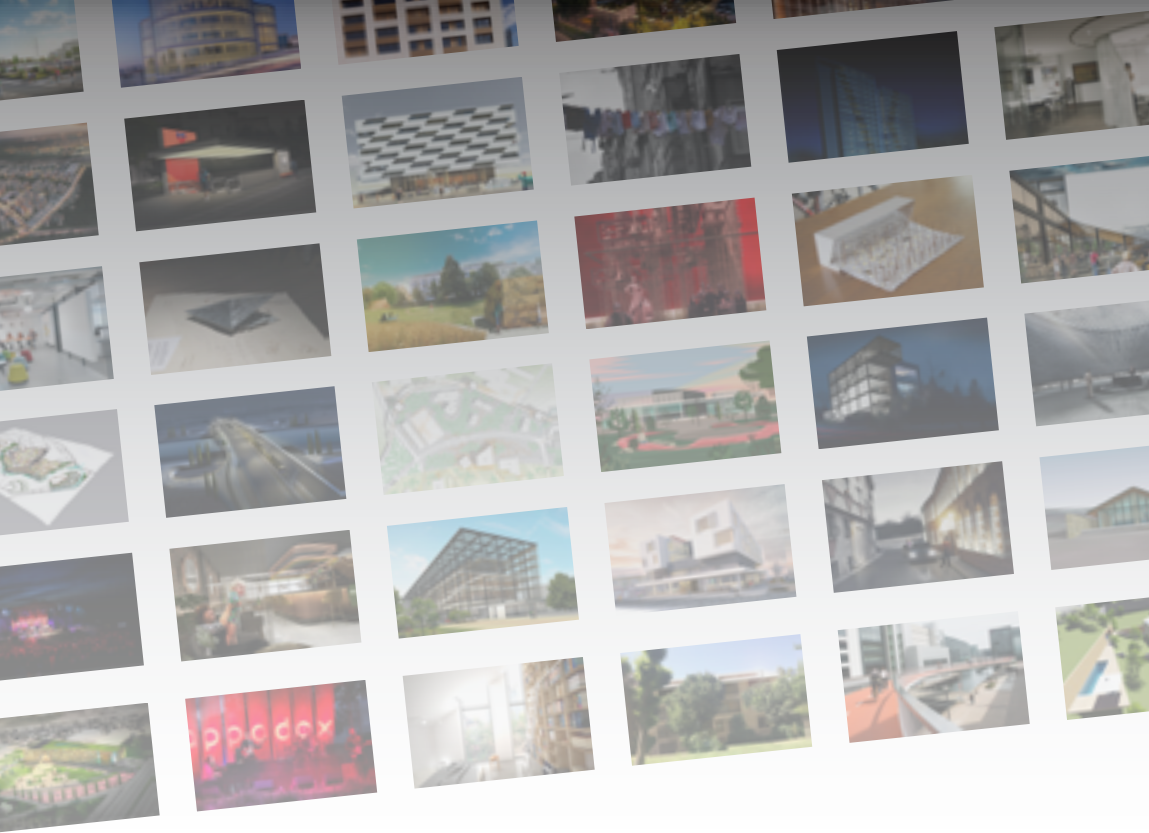
In terms of machinery and land use, the design is very flexible for accommodating a larger energy production facility. The main constraint is the size of the land used for algae cultivation. In future case scenarios, considering the possibilities for higher productivity rate of biodiesel from algae and larger area use for algae cultivation it would be normal to expect an exponential increase in the annual energy output. This increase would mean that the energy vision shown by the **Factoryscape** foresees a more feasible and accessible system for the future.



PLAN & SECTION



The red, high-contrast permanent structure will act as a interaction point for citizens and media.



Thank you for taking your time. If you have further questions, please do not hesitate to ask me by calling or you may write me anytime.

To see all my works please visit my website.

+44-7766-401059
mail@hpenbeoglu.com

London / UK

<https://hpenbeoglu.com>